



Life Line

March 2011

New Life Lutheran Church

249 N. Bolingbrook Dr., Bolingbrook, IL 60440

Tel: 630.759.7636 Fax: 630.759.7790

www.newlifebolingbrook.com

Where everybody is somebody and Jesus Christ is Lord!



Dear Brothers and Sisters of New Life,

As the snow from the recent blizzard begins to melt, we look to March for signs of an early Spring. Enough with the layered clothing to handle the cold temperatures, we are looking to bring on the growing season for lawns and gardens. The 2011 Council held its first meeting in February as it begins its season in growing the ministry of New Life. New members were introduced with organizational issues handled. Each standing committee has a council member attending to act as a communication link between the council and the committee. Understanding each committee's direction, challenges, and opportunities is important to both the Council and committee. As noted in the January Congregational meeting, the Outreach committee is in the re-start phase with volunteers needed to get this committee up and running. Please talk with any Council Member, Pastors, or the Church office if you are interested participating in a dynamic and critical part of our ministry.

We also had the privilege of voting on another term of service for our Treasurer – Cyndi Torkelson. Cyndi has been faithfully and expertly handling the Treasurer's position for 3 years and so gracefully accepted another year to share her talents. We are so thankful for her service as well as that of our Financial Secretary – John Beaugard – who is beginning his third year of service. We are blessed with the talents that both of these individuals bring to New Life.

Some Council members will be attending the Congregational Resourcing Event on March 19 where the Synod sponsors work shops on a number of topics involving ministry issues of the church. This is an excellent event for Council, committee, and interested congregational members to attend workshops on topics that are of interest. The Church office will have the details.

We excited with the opportunity to serve and look forward to the opportunities ahead.

Your servant,
Jack Schlea, Council President

From the Pastor's Desk.....

The Season of Lent is close at hand. Another opportunity to focus intently on the message of Christ's coming into the world to bring wholeness, healing forgiveness and hope. We see Christ lifted up on a hill - on a cross - in our world and in our lives. This is the time of year to attempt a Lenten Discipline to sharpen our vision of Christ. At New Life we encourage members to make Lent a time to study scripture with other brothers and sisters. I would hope that you are part of a small group study this Lent as we consider what scripture tells us about how we, as the church, can be a reflection of Christ in the world.

I recently returned from New Life's mission trip to New Orleans. As we gathered in prayer before we headed home, I asked those on the trip to reflect on where they saw Christ in that past week. Some saw Christ in the home owners face as he expressed how grateful he was for our presence.

Others saw Christ in the determination and patience of that same home owner and his wife, who for five years have been living in Atlanta. Despite being ripped off by con artists, they continue to - bit by bit - get their home in living condition, so they can come home to New Orleans.

Still others saw Christ in being taught how to lay flooring and accomplishing the formidable task of completing a whole room on their own (closet included).

Some saw Christ in the ability we had as a group to forgive one another and focus on the mission we shared when living and working closely together, under pressure, exposed weaknesses and tried each other's patience.

Others saw Christ in a determined people who were still coming to the Gulf Coast years after the hurricane. to bring hope and healing - one floor or wall or roof at a time. Many saw Christ in the face of a faith filled lady that rescued horses from the flood and continues to care for abused and neglected horses. She brings horses back to life and in doing so, touches the lives of at risk children who come to volunteer at her stable. She is more than bold to proclaim her love of horses and children come from her love of the Lord.

One surely does not have to go to New Orleans to see Christ. However, it is most helpful to set time aside so sightings of Christ may be recognized. The Season of Lent offers the opportunity for the discipline of study and reflection. Why not join a Lenten Study Group and consider where you see the face of Christ in your life and in the world.

And may others see the Christ in you,
Pastor Paul



February Missionaries: Nancy Butcher, Chris Miller, Jon Laukaitis, Kim Cooper, Dan Dehnert, Lee Dillon, Mike Ferrara, Pastor Paul

Lent Begins!

Lent begins Ash Wednesday, March 9. Ash Wednesday Service will be at 7:30pm. We will once again begin our Lenten Journey with the **Sacramental Journey**: receiving ashes on our foreheads in the form of a cross, receiving the bread and wine of Holy Communion, receiving a blessing from a pastor, and finally, receiving water from the baptismal font, wiping away the cross of ashes on our foreheads. In the quiet of the evening, we will renew our discipleship focus of repentance and prayer, confession and thanksgiving.



Lenten Pit Stops! 2011 Lenten Small Group Study

For our congregational Lenten discipline, we are again encouraging everyone to participate in a small group, just like last year. There are many options (many different days of the week, times, and locations) and every group will do the same study, "Lenten Pit Stops." Groups will begin meeting the week of March 13 and continue together for 5 weeks. Check out the Purple & NASCAR Graffiti Wall in the narthex to see

how groups are responding to the study.

Our Lenten Small Groups will be a way to get back to some good, old-fashioned human connection in the flesh. We will see each others faces, hear each other voices, pray with one another, open God's Word together. *You are encouraged this Lent to take on this Lenten Discipline of studying in small group with Christian brothers and sisters.*

MARCH 27, 2011 HAS BEEN DESIGNATED MISSION ENDOWMENT SUNDAY

Since this is New Life's 41st Anniversary,
we suggest a gift to the fund of \$41.

The New Life Mission Endowment Fund is a charitable trust fund administered by New Life Lutheran Church of Bolingbrook. Giving to the fund provides a wonderful way of continuing your contribution to God's work for years to come.

Gifts to the fund can be made in several ways. Contributions can be made for special occasions such as baptism's, birthdays, anniversaries, or in memory of loved ones. Gifts can be designated in a Will or Trust or beneficiary designation on Life Insurance. (Professional advice is recommended for these methods.)

The goal is to reach \$50,000 before the interest earned can be used in other missions. The fund has a current balance of about \$34,500. The Fund is administered by a committee of five who are elected by the congregation. Requests regarding the use of the interest generated must be approved by a majority of the Fund committee and the church council.

Current committee members are Spencer Gerke, Dan Kloepfer, Scott Bovaird, Shireen Behzadi and John Schmidt.

THE TALE OF THE THREE TREES

Youth Spring Musical

Come see 18 of our amazing 2nd-8th graders share God's message in our spring musical *The Tale of Three Trees*. We all have dreams. This folktale reminds us that God has even bigger dreams for us than we can imagine. Come share the joy of watching dreams the first weekend in March!

We have two performances. Bring a friend. Bring a family member. Bring many friends and family members!

Saturday, March 5 at 7pm followed by dessert at 7:45pm

Sunday, March 6 at 11am worship service

The youth have been working very hard at rehearsals since December. We are very excited to have Shireen Behzadi, who recently directed the fall play *Noises Off* at Bolingbrook High School, as our drama director in addition to our youth choir team. Please join us!





OUTREACH

Outreach Committee

Out of hibernation and back to ministry! The Outreach Committee will meet Wednesday, March 16 from 6:30 to 8:00pm. Exciting ministry is on Outreach's plate; come be a part of reaching out the community in the name of Christ.

Worship Committee

Worship Committee meets the first Thursday of every month from 6:30 to 7:30pm in the Genesis Room. Our next meeting will be Thursday, March 3. We are currently working on creating Training Videos for all Worship Participant Roles. *If you are interested in being trained as a greeter, reader, or communion assistant, videos are available on Sunday mornings for you to take home, view, and pass along to another person!*

Being a Communion Assistant on Sunday Mornings

Previously, folks signed up to be communion assistants for a month. There is now a new system that began this fall. Worship Assistants now find the communion assistants for each worship service, each Sunday. The Worship Assistant will have a list of folks who are willing to be a communion assistant for any worship service they attend. ****To be on this list, sign-up in the narthex, giving your name and your usual worship time(s).**** The hope is encourage broad and deep participation within the congregation in this important ministry—serving the body and blood of our Lord, Jesus Christ. *Further—if you would like to be trained to be a communion assistant, a training video is available! Contact the Worship Committee or Pastor Rake!*



Daylight Savings Time Begins

March 13th

**Don't forget to set your
clocks ahead one hour!**



High School Youth Group Annual Plant Sale

New Life's High School Youth Group will again be sponsoring its annual plant sale. We will be offering you the opportunity to purchase top quality plants including flowers, vegetables and hanging baskets for your yard or garden. The Plants also make a great Mother's Day gift!

ORDER DUE DATE: APRIL 10, 2011

DELIVERY DATE: April 30, 2011 11:00am-1:00pm

DELIVERY LOCATION: NEW LIFE

Delivery to your home is also available

The money raised from this year's sale will help fund our high school youth trip to Group Work camps in Omaha, Nebraska this summer, along with a variety of other events throughout the coming year.

For more information please contact any High School Youth Group member or Sherry Krabbenhoft at (630) 759-1498 or by e-mail sher1935@gmail.com

***Order Form available online at www.newlifebolingbrook.com
and in center of this newsletter.***

Thank you for your support of the youth at New Life!

New Life for New Life Vision Team



The Vision Coordinating Team's Task is close to completion and we will soon be passing the torch to our Council.

Three of the Ministry Design Teams have completed their work with their drafts being passed along to the Writing Team. The Structure Team is working with these drafts as well to determine if any structure adjustments would be recommended. Their final draft will soon be submitted to the Vision Coordinating Team and the Writing Team.

We are blessed with an abundance of ideas and strategies that are now being crafted into a final Ministry Plan that will be submitted to council sometime in the next few weeks. Please pray for all our teams that the Spirit be present as they wrap up their work in these next few weeks.

SUPPLY Youth Group meets the 1st and 3rd Sundays SUPPLY is the New Life High School youth group and includes all 9th-12th graders. In March, SUPPLY will meet on **Sundays Mar. 6 & Mar. 20 from 7pm to 8:30pm** at the youth house.

SUPPLY Sunday School

Sunday School for SUPPLY is at 9:30 a.m. in the youth house. This year we are doing something called LIVE. It's an awesome program and all that's needed is the youth to do the talking!



Thank you to everyone who contributed to Souper Bowl Sunday.

The Confirmation Class was able to collect \$823.00 for

ELCA World Hunger. **WOW!**



VBS SAVE THE DATE

Vacation Bible School week is June 27th to July 1st and it is for children ages 3 (potty trained) to grade 5 (finished). The times are 9am to Noon.

The theme for this year is:
"Shake it up Café".

MARCH WORSHIP LEADERS

Greeters

8:00am	Jacob Maki
9:30am	Mike & Dawn Morfoot
11:00am	Dick & Jean Lou Hess

Worship Assistants

8:00am	Sandy Niemiera
9:30am	Norb Weitendorf
11:00am	Mike Selep

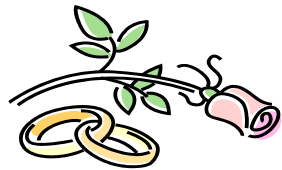
Ushers

8:00am	Gayle Sieder, Brenda Roeber, Nancy Leiting, Glendora Bland
9:30am	Spencer Gerke, Jim and Jeremy Cassidy, Rose Nickles, Larry & Jennifer Calloni
11:00am	Gretchen Stapp, Beth Girardier

Volunteers are always needed to help with worship - interested?
Contact the church office at 630.759.7636 or
officemgr@newlifebolingbrook.com

March Anniversaries

1 st	Bob & Marilyn Lamont
18 th	John & Jackie Schmidt
22 nd	John & Amy Beaugard Craig & Jennifer Chamberlin
24 th	Greg & Sherry Krabbenhoft



If you do not see your name & date here please let the church office know. Thanks

Stewardship Alternative Resources

Daily Scripture:

God understands the way to it, and God knows its place.

For God looks to the ends of the earth, and sees everything under the heavens.

When God gave to the wind its power, and apportioned out the waters by measure; when God made a decree for the rain, and a way for the thunderbolt; then God saw it and declared it; God established it, and searched it out.

Job 28:23-27

This church will engage in dialogue with corporations on how to promote justice for creation. We will converse with business leadership regarding the health of workers, consumers, and the environment. We will invite the insights and concerns of business leadership regarding responsible environmental actions. We will urge businesses to implement comprehensive environmental principles.

From the ELCA social statement "Caring for Creation"

Fact:

The wind in North Dakota alone could provide about 1/3 of U.S. electricity. Additionally, about 20% of U.S. energy demand could be provided at an *economical* price by wind power.

Commitment:

Immediate- In certain states, for a nominal fee you can request that your electricity provider ensure that your energy come from renewable resources.

Look online at: <http://www.epa.gov/greenpower/index.htm>

Long term- Look into solar, geothermic, wind (turbine) energy for your home, congregation or institution. Advocate for the alternative energy use in your city, county and state. One faith based resource is The Regeneration Project at : <http://www.theregenerationproject.org/>

Daily Prayer:

Holy God, you are known in the wind, in the water, in the brightness of the sun. Help us to responsibly use all your power to be the energy which powers our lives. Amen.

Solar Energy International – www.solarenergy.org

Created By Sara Olson and Brooke Petersen

Produced for the Web of Creation (www.webofcreation.org) at

Youth Ministry Calendar Winter-Spring-Summer 2011

More information on all events comes out to respective groups as dates draw near. If you have any questions, please feel free to talk with identified youth ministry liaisons:

Amy Beaugard—J.A.B. Coordinator (6-8th grade)
Joe Moles—S.U.P.P.L.Y Coordinator (9-12th grade)
Sally Minor—Confirmation Leader
Julie Selep— Youth Education Coordinator
Ms. June
Pastor Rakel

March

5th & 6th Youth Spring Musical
6th SUPPLY youth group
20th SUPPLY youth group
27th JAB Night

April

1st-3rd JAB Quake Event
3rd SUPPLY youth group
10th JAB Post-Quake Lunch Debrief
17th SUPPLY youth group
21st Maundy Thursday Stripping of Altar (Confirmation)
24th SUPPLY Easter Breakfast

May

1st SUPPLY youth group
15th SUPPLY youth group
22nd Last Day of Sunday School
22nd JAB Night

June

10th First Communion Retreat (4th graders)
12th First Communion Sunday
19th-25th SUPPLY Workcamp Trip to Omaha, NE
27th—July 1st Vacation Bible School

Lenten Bible Studies

The following Bible Studies begin the week of March 13th.
Sign up now!

Sunday	9:30am	Church	Jerry Streeky & Dorothy Dominiak
Sunday	2:00pm	Nickles' Home	Rose Nickles & Florence Johnson
Monday	7:30pm	Various Homes	Deb Countryman
Tuesday	9:30am	Brown's Home	Susan Brown
Tuesday	7:00pm	Ashbury's	Pastor Rakel & Sandy Niemiera
Wednesday	6:30pm	Church	Jack Schlea & Spencer Gerke
Wednesday	7:30pm	Church	Ken & Sue McConnaughay
Thursday	10:00am	Church	Pastor Paul
Friday	7:00pm	Beaugard's Home	John & Amy Beaugard
Saturday	10:00am	Freeman's Home	Laurie Freeman & Cheryl Deardorff
Saturday	6:00pm	Giganti's Home	Joe & Daryl Giganti

Questions? Please contact the church office 630.759.7636
officemgr@newlifebolingbrook.com



God's work in mission always propels us to encounter the neighbor, particularly in the stranger. **ELCA Glocal Mission Gatherings** equip us for God's work in today's glocal and local realities as well as their "glocal" intersections. Come, join us for mission conversations around the realities of the world we live

in today, Friday, May 6, 2:00 pm - Saturday, May 7, 5:30 pm at St. Luke's Lutheran Church, Park Ridge. The Glocal Mission Gathering (GMG) gathers congregational leaders for a day and a half of worship, workshops and sharing around glocal and local mission. For only \$35 per person, your team can: Enhance your connections with the worldwide Christian family, Gain practical skills for mission, Engage in current intersections of mission, migration, and immigration, Give, receive, and serve more effectively, Discover how changes in the world are transforming the way churches like the ELCA proclaim and serve, Lead inviting worship that includes glocal voices, and Travel internationally in a way that is effective, sustainable, respectful, and cross-culturally sensitive. www.elca.org/glocal

=== Get to Know Us ===

* THE CARE TEAM *

Seeking to provide care and compassion to our congregation, our community and the world around us. The Care Team is an expression of faith: a response to God's new commandment in *John 13:34-35*,

"As I have loved you, so you must love one another."

CARE NOTES:

Lenten themed booklets are now available on the kiosk in the back of the sanctuary. Stop by to check out these resources for your Lenten journey as well as many other subjects available for adults, teens and kids.

BLOOD DRIVE:

Save-The-Date: Your next opportunity to give the gift of life is April 17. Any donors from January will be able to give again and of course, any new donors are welcome. Did you know that 60% of the population is eligible to donate, yet fewer than 3% actually do? Every gift makes a difference for someone. Sign-up sheet will be posted in the narthex mid-March. Walk-ins welcome too!

MARY MARTHAS:

This is a ministry that has been around a long time at New Life. But maybe you aren't familiar with it or don't remember the story of sisters Mary and Martha from the Luke 10:38-42. While Martha was busy preparing a meal for Jesus who had come to their home, Mary was sitting at Jesus' feet to listen to Him. As Mary Martha volunteers we are called to provide a meal for a member that is in a health care crisis, or recovering at home from illness/surgery or to those who have suffered a loss; and be present to listen and pray for their needs.

We have just updated this ministry by having an interactive, on line menu calendar called Meal Train that is customized to the family in need including drop off times, meal preferences, and running list of past meals so everyone doesn't bring meatloaf! This new tool will help

- make it easier to know of the opportunity to serve,
- make it easier to schedule a variety of people, and
- give the family a way to visually see the support from many different people as well as receive words of encouragement.

How Does It Work?

* You will receive an email from Meal Train with the personalized web address to access the specific page for a specific family.

* When you click on the link, you will need to create your user account which is your email address and password of your choosing.

* You simply will click on the "book this date" icon next to the date that you wish to provide a meal.

- There is also a section where you can write a note or word of encouragement for the family.

- * This website will also send you a reminder email a few days before your reserved date!
- * The frequency of providing a meal is likely less than once a month.
- * If there is another family in need of this support in the future, you will receive another email from Meal Train with that family's personalized web address to access their specific page.
- * It's very easy to use after you've viewed the page but Susan Brown is willing to help anyone who needs it or has questions.

If you are interested in joining this ministry and using this new tool, please sign up in the narthex, contact the church office or Susan Brown to get started.

If you are interested in joining this ministry but don't have email or don't want to use the online tool, you can still be involved by signing up in the narthex or contacting the church office or Susan Brown. And even if you don't cook or have time to cook; it's still a gift to know where to get good take-out food!

COMMUNITY EASTER BASKETS

As the calendar rolls to March, we start to think Easter. But Easter is not until the end of April! But you can get in the mood by signing up to donate food items for the Community Food Baskets. We have been able to provide baskets for many families in our community to experience the love of Christ through this sharing of our gifts. The poster will go up at the end of March. Donations will need to be at the church by Sunday, April 17 to be packed by our Confirmation Class.

CARING FOR GOD'S CREATION – APRIL EARTH MONTH

Just in case someone is getting the urge to do some spring cleaning early with the 50 degree temperature; we wanted to give you a heads up on what items we will be collecting during the month of April to recycle responsibly. Collection containers will be available in the fellowship hall at the church starting in April through the end of the month.

1. Household Batteries – AAA, AA, C, D, 9-volt Batteries do not belong in landfills as the metals have the potential to leach slowly into soil, groundwater or surface water.
2. Old, worn-out, run down tennis shoes - have a second life as being ground up and reused to make playground surfaces. Blue wire bin is currently located in fellowship hall and will continue through the end of April.
3. Glasses, hearing aids, magnifiers, "talking" clocks, and white canes are all items that can be recycled by the Lions Club to provide services for others.
4. Cell phones & printer ink cartridges – reprogrammed for emergency use and cartridges can be refilled.
5. Greeting cards - Recycling cards can support the children's non-profit organization of St. Jude's Ranch for Children. All occasions of greeting cards are accepted, except the brands Hallmark, Disney or American Greetings. Only the card front can be used (back side cannot have any handwriting.)

AVAILABLE RIGHT NOW AND EVERYDAY:

- newspaper/white paper/magazine recycling are available in green/yellow bin at the north end of the parking lot at church.
- Pop tabs are recycled to benefit Ronald McDonald House. White bucket is available in the fellowship hall next to the pop machine.

SERVANT PROJECTS:

More and more Christians are becoming aware that the heart of God is to move beyond just the sanctuary and into the world to minister compassion and justice. We want to provide and promote opportunities for you and/or your family to be of service to caring for someone in our community or God's creation. Watch the website, monthly newsletter, Sunday bulletins and bulletin board in the narthex for upcoming opportunities.

HOSPITAL SISTERS MISSION OUTREACH

The Hospital Sisters of the Third Order Regular of St. Francis have a mission to be good stewards both locally and abroad. They have systems in place to receive, refurbish and redistribute surplus equipment and medical goods to organizations in need. The program offers servant opportunities by sorting medical supplies as well as learning what it truly means to be "green" and become part of the environmental and social justice movement. Their warehouse is located in Bedford Park at 5213 W. 65th Street. Scheduled volunteer sessions are:

Tuesday and Wednesday from 9 a.m. - 12 p.m.

Tuesday and Thursday from 1 p.m. - 4 p.m.

Thursday evening from 5 p.m. – 7 p.m.

The 2nd and 4th Saturdays of a month from 9 a.m. - 12 p.m.

This is an opportunity you can schedule on your own or with a group of adults from church or your neighborhood. You can go once or once a month! To serve, simply call Mary Ann Skvara, Warehouse & Logistics Facilitator at 708-496-3900 to get on the calendar.

F.A.N.S. Friends Family and Neighbors Supporting Students

Here is a volunteer opportunity for individuals to get involved with our Valley View School District 365U students in Bolingbrook. Can you spend an hour each week with a child? Can you be a good listener? Can you help a child gain new skills, interests and expand their experience? If you answer yes, these following mentoring programs are available:

Read to a Kindergarten student during the school day

Lunch buddies: Eating lunch with an elementary school student one day a week, throughout the school year.

One-to-One: Giving time and attention to a middle school child while enjoying shared activities.

High School Mentoring: Developing a positive relationship with a teen, showing them you care.

Being a mentor is about sharing simple moments with a child to provide the extra boost they need to stay in school and grow up right. Training is provided by Big Brothers Big Sisters. For more information, contact Carrie Johnstone at the school district 815-886-2700 x527 or johnstonecl@vvsd.org

FOOD PANTRY:

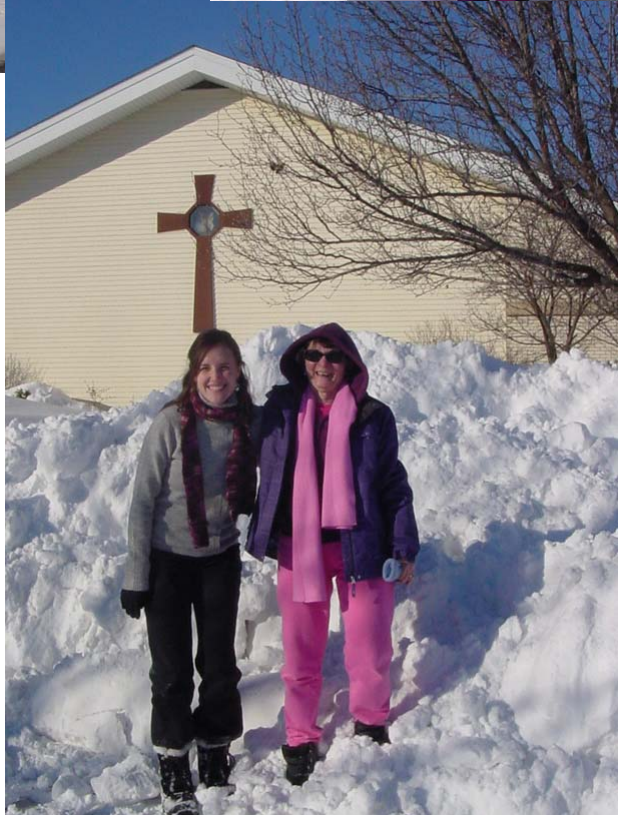
An ongoing opportunity for you to share your gifts is by contributing an item to the food pantry. Maybe consider a "giving journey" during Lent where every week you could add an item to your grocery list and then place that item in the shopping cart in the narthex. And if you are looking for some suggestions; in honor of St. Patrick's Day, how about some green foods (vegetables would be a good choice) or a food item in green packaging or any item of your choosing. Please remember that these boxes, bags, or cans must be unopened and unexpired.



February 2011

**The
Blizzard
Hits
New Life**

**13
Hours
of
Plowing
to Clear our Lot!**



2011 LOMC Summer Camp Schedule

It is not too early to register for Summer Camp! Some scholarship money is available. Information on specific camps is located on the bulletin board in the office hallway. A \$50 deposit holds your space. See Ms. June or call 630-759-7636 for more information.

Grade	1st - 3rd	4th-6th	6th-8th	9th-12th
June 12-17	Out of the Box Day Camp	Jr. Choir Mud Pies Day Camp	Picture This Rock Star	Picture This
June 19-24	Joy Camp Day Camp	Art Show Wet & Wild Day Camp	Faith Works Extravaganza Hoot Camp	
June 26-July 1	All the World's A Stage Day Camp	All the World's A Stage All Stars Day Camp	All the World's A Stage Mission Impossible	All the World's A Stage Theka
July 3-8	Wet & Wild Day Camp	Gone Fishing Art Show Day Camp	Faith Works for Individuals Gone Fishing	Theka (week 2)
July 10-15	Animal Planet Day Camp	Adventure Camp Trail Riders Day Camp	Trail Riders Hoot Camp Rock Star	
July 17-22	Joy Camp Day Camp	Gone Fishing Wet & Wild Day Camp	Survivor LOMC's Got Talent	Swing Choir Tour Survivor
July 24-29	Mud Pies Day Camp	All Stars Adventure Camp Day Camp	Tee Time Swing Choir	Swing Choir Tour (week 2)
July 31- Aug. 5	Wet & Wild Day Camp	Art Show Mud Pies Day Camp	Hoot Camp	SALT for Individuals
August 7-12	Retro Week Day Camp	Retro Week Day Camp	Retro Week	Retro Week

A STEWARDSHIP MINUTE

Inspiring a deeper understanding of true giving

We would like to focus your attention on a letter written to the editor in the February issue of the Christian newsletter called **Stewardship**. The writer of the letter gently reminded the editor that articles in the newsletter should not shortchange the Gospel theme of God's love for us.

His point was that we Christians love because God first loved us. Our stewardship should be in response to God's unstinting love and grace poured out on us, in us, and for us. As St. Paul put it in his letter to the church at Rome: "God's love has been poured into our hearts through the Holy Spirit that has been given to us." (Romans 5:5) St. Paul went on to say: "God proves his love for us in that while we still were sinners Christ died for us." (Romans 5:8) The cross should always remind us of that.

So, someone may ask, what does God's love for us have to do with stewardship? Well, everything! That's all. Simply everything!

Our lives came from God. Our bodies, our brains, our talents, our time on earth, our ability to be creative, to serve, to work, to earn, to share....are all the result of God's love and our response to that love.

The bottom line regarding our stewardship is how willing we are to use our lives to lovingly serve God in whatever way the Holy Spirit leads us. Whenever we awake each day, our first prayer should be to thank God for the life and the blessings God has given us. And then to ask for guidance and the strength to do whatever service God wishes for us to do.

We close with another quote from St. Paul, this one found in Romans 12:1: "I appeal to you therefore, brothers and sisters, by the mercies of God, to present your bodies as a living sacrifice, holy and acceptable to God, which is your spiritual worship."

Prayer: Dear Lord, keep reminding us that we belong to you and will find our greatest pleasure in loving and serving you in all things. **Amen**

Blessings from your Stewardship Committee on your Stewardship Journey!

Change of Address

NAME, ADDRESS, PHONE changes:



Paul, Greg

P.O. Box 3535
Crossville, TN 38557-3535

Foss, Ellen

123 Lakeview Drive
Bolingbrook, IL 60440