



Life Line

April 2011

New Life Lutheran Church

249 N. Bolingbrook Dr., Bolingbrook, IL 60440

Tel: 630.759.7636 Fax: 630.759.7790

www.newlifebolingbrook.com

Where everybody is somebody and Jesus Christ is Lord!

Holy Week & Easter Services



Our Lenten Journey will culminate in Holy Week, with special services to remember the Passion of our Lord, from when he entered Jerusalem until disciples run toward the empty tomb.

Palm Sunday, April 17. This is the day that Jesus arrives in Jerusalem, on a donkey, to a king's welcome, with palms waving. The Chancel Choir will sing their Palm Sunday Cantata at all three services.

Maundy Thursday, April 21, 7:30pm. This is the night where Jesus washes his disciples feet and gives them a new *mandate* (hence, "Maundy") or commandment: Love one another as I have loved you. Service with foot washing, communion, and the stripping of the altar, is at 7:30pm.

Good Friday, April 22, 7:30pm. This is the day that our Lord was nailed to a cross and died. To remember this somber and life-changing day, we worship with a Tenebrae Service, giving space for the movement from light to shadows.

Easter Sunday, April 24: 6:30, 8:00, 9:30, and 11:00 a.m. Christ is Risen! We celebrate our Lord's victory over death with a sunrise service in the "tomb" at 6:30am, followed by Easter Resurrection Celebrations at 8:00, 9:30 and 11:00 a.m. Death and sin do not have the final say!

From the Pastor's Desk.....

Much is springing alive...the ground, the trees, the weekend sport schedules and in a few weeks, even an empty tomb. And there's one more thing.

An Outreach ministry designed to welcome new residents in the community has been birthed and is beginning to breathe. It looks like people from New Life giving bread to strangers. But here's what's really going on.

1. The Outreach Committee has learned from another church this bread & hospitality ministry and wishes to implement it here at New Life.
2. The new ministry needs people like you who
 - a. like to smile
 - b. give a brief "welcome" to folks new to a community
 - c. have an hour to give, one Saturday a month
 - d. feel it's important to get outside our church walls and do some welcoming

There will be two trainings offered for any and all wishing to be involved in this new ministry. They are Saturday, April 30 at 9:00am in the Confirmation Room and Sunday, May 1 at noon in the Genesis Room. Trainings should take about 30 minutes.

Some of you might be wondering—don't we already deliver bread? In the past we certainly have. Bread was taken to first time visitors of New Life, provided we had their address. That has waned in the past year. But, at the last New Members Class, all new members received a freshly baked loaf of bread at their first class—so some bread & hospitality has still been happening.

The Outreach Committee believes this is a worthwhile ministry and is committed to working to make it grow. The church we have learned from, St. John's Lutheran in Somonauk, has been practicing this Bread & Hospitality ministry for 13 years and says it is one of the best things they do. So we will try it here; we may modify it a bit, since this is New Life and not St. John's. And in the process we expect to be led by the Spirit, taught by the Spirit, and meet more of God's people. There's nothing to lose!

New Life is the kind of place where everybody is Somebody and Jesus Christ is Lord.

I think New Lifers are bold enough to make Bolingbrook the same kind of place.

Pastor Rakel

New Members Class

The Spring New Members Class will begin the week after Easter, on Sunday, May 1st. It will meet at 9:30am and is open to all members who would like to learn a bit more in depth about our shared Lutheran faith and the intricacies to New Life. Please speak with Pastor Rakel if you or someone you know may be interested. The class will continue through Sunday, June 5th.



**CHURCH
COUNCIL**

Brothers and Sisters in Christ,

As I write this, Spring officially arrived last weekend. Although we will still have some chilly weather, we can be comforted knowing that the flowers, lawns, and gardens of God's creation will be waking soon. As we look forward to the warming weather and celebrate the season of Lent, we are also progressing with our New Life for New Life vision process. The Writing Team is putting the finishing touches on the Vision Statement and will be presenting it to the Vision Team shortly. We are very anxious to analyze this work to begin to integrate elements into our ministry here at New Life. The Council is scheduled for a Retreat on May 20 and 22 to discuss implementation of the New Life for New Life Vision.

The February financial report provided us with the confirming news that this winter's weather has been extra challenging. Utility bills have been higher than projected and the extra snow required more work to keep our parking lot and sidewalks cleared for the safe use of our facility. Receipts for the month were also below projection. The end result is an \$8700 shortfall for the month of February. Although it is still early in the year, we will continue to monitor the situation. The members of New Life are a very determined group in doing God's work that solutions as well as other opportunities will present themselves. We ask for your prayers and support in this continuing challenge.

Committees are always in need of additional members – If you are interested, please contact a council member, Pastor, or the Church office. Being involved is an important part of stewardship.

In Christ's Service,
Jack Schlea
Council President



Save the Date

We will be celebrating June Charnevsky's 35th work anniversary at New Life. The celebration will be between the 9:30 am and the 11am service on Sunday May 1st with cake, etc. Please plan on coming to church during that time to celebrate with June and the whole New Life Family.

BIBLE CLASS

Survey of the Old Testament

We are continuing our Bible fundamentals series. The next class is ***“Survey of the Old Testament.”*** It will be six sessions beginning on Sunday May 1st. The class will meet from 9:30 – 10:30 am. God’s plan for salvation begins in the Old Testament. His plan focuses on Jesus Christ and His promises and symbols in the Old Testament which all point toward the life, death and resurrection of Jesus. The major sections covered include:

The Pentateuch (first five books of the OT) – tells the story of God’s relationship with the world and the Hebrew people.

Historical Books (Joshua to Esther) – tells the story of the Israelite people’s entry into the Promised Land of Canaan; transition into kingdom; division into two kingdoms; downfall and exile; return from exile.

Wisdom Literature (Job, Psalms, Proverbs, Ecclesiastes & Song of Solomon) – writings of poetry and practical wisdom.

Prophets (Isaiah – Malachi) – the prophets through their oracles speak for God. . Through the prophets God will both enforce the covenants and keep the promises to Abraham and David.

All that is needed is your Bible and a curious mind to gain a basic understanding of the unfolding story of the Old Testament.

If you are interested in attending this class please contact John Beaugard.
jbeaugard@rummelins.com



Make plans to dine and laugh Friday through Sunday May 6-8, when the New Life Drama team presents the Christian comedy “Camp W”. Counselors and campers wisecrack their way through the day at this run-down Christian Youth Camp. Will their misadventures succeed in destroying the camp?

Which will it be:

Blow-it-up or Shut-it-down?

Keep your night-light on for further details!

Performances: Friday at 7pm, Saturday at 7pm and Sunday at 4pm

National Day of Prayer

Thursday, May 5, 2011

6:00 am Prayer Breakfast

\$10.00 / Person

Bolingbrook Golf Club
2001 Rodeo Drive, Bolingbrook, IL 60490

***"I WILL SAY THE LORD, HE IS MY REFUGE AND MY FORTRESS, MY GOD,
IN WHOM I TRUST" Psalm 91:2***

Checks payable to Bolingbrook Community Church

Mail to:

PO Box 926, Bolingbrook IL. 60440

Or Online at

www.bolingbrookchurch.org

Worship Committee

Worship Committee meets the first Thursday of every month from 6:30 to 7:30pm in the Genesis Room. Our next meeting will be Thursday, April 7. We are currently working on creating Training Videos for all Worship Participant Roles. *If you are interested in being trained as a greeter, reader, or communion assistant, videos are available on Sunday mornings for you to take home, view, and pass along to another person!*

Being a Communion Assistant on Sunday Mornings

Previously, folks signed up to be communion assistants for a month. There is now a new system that began this fall. Worship Assistants now find the communion assistants for each worship service, each Sunday. The Worship Assistant will have a list of folks who are willing to be a communion assistant for any worship service they attend. ****To be on this list, sign-up in the narthex, giving your name and your usual worship time(s).**** The hope is encourage broad and deep participation within the congregation in this important ministry—serving the body and blood of our Lord, Jesus Christ. *Further—if you would like to be trained to be a communion assistant, a training video is available! Contact the Worship Committee or Pastor Rakel*

Outreach Committee

Out of hibernation and back to ministry! The Outreach Committee will meet Wednesday, April 13 from 6:30 to 8:00pm. Exciting ministry is on Outreach's plate; come be a part of reaching out the community in the name of Christ.



High School Youth Group Annual Plant Sale

New Life's High School Youth Group will again be sponsoring its annual plant sale. We will be offering you the opportunity to purchase top quality plants including flowers, vegetables and hanging baskets for your yard or garden.

The Plants also make a great Mother's Day gift!

ORDER DUE DATE: APRIL 10, 2011

DELIVERY DATE: April 30, 2011 11:00am-1:00pm

DELIVERY LOCATION: NEW LIFE

Delivery to your home is also available

The money raised from this year's sale will help fund our high school youth trip to Group Work camps in Omaha, Nebraska this summer, along with a variety of other events throughout the coming year.

For more information please contact any High School Youth Group member or Sherry Krabbenhoft at (630) 759-1498 or by e-mail sher1935@gmail.com

***Order Form available online at www.newlifebolingbrook.com
and in center of this newsletter.***

Thank you for your support of the youth at New Life!

SUPPLY Youth Group

SUPPLY Youth Group meets the 1st and 3rd Sundays SUPPLY is the New Life High School youth group and includes all 9th-12th graders. In March, SUPPLY will meet on **Sundays April 3 & April 17 from 7pm to 8:30pm** at the youth house.

SUPPLY Sunday School

Sunday School for SUPPLY is at 9:30 a.m. in the youth house. This year we are doing something called LIVE. It's an awesome program and all that's needed is the youth to do the talking!



EASTER EGG HUNT

is Saturday, April 23rd from noon to 1:30p. Remember to bring a basket for your child to collect the eggs. Tickets on sale soon!

1st Communion Sunday is June 12 at 10am. The mini retreat for all 4th grade students and higher who have NOT received instructions is June 10 from 6p to 9p. Please mark your calendars. Any questions-please talk to Pastor Raket or Ms June



VBS SAVE THE DATE

Vacation Bible School week is June 27th to July 1st and it is for children ages 3 (potty trained) to grade 5 (finished). The times are 9am to Noon.

The theme for this year is:

"Shake it up Café".



**Registration forms will be available beginning mid - April.
Watch for them in the Narthex.**

Youth Ministry Calendar Winter-Spring-Summer 2011

More information on all events comes out to respective groups as dates draw near. If you have any questions, please feel free to talk with identified youth ministry liaisons:

Amy Beaugard—J.A.B. Coordinator (6-8th grade)
Joe Moles—S.U.P.P.L.Y Coordinator (9-12th grade)
Sally Minor—Confirmation Leader
Julie Selep— Youth Education Coordinator
Ms. June
Pastor Rakel

April

1st-3rd JAB Quake Event
3rd SUPPLY youth group
10th JAB Post-Quake Lunch Debrief
17th SUPPLY youth group
21st Maundy Thursday Stripping of Altar (Confirmation)
24th SUPPLY Easter Breakfast

May

1st SUPPLY youth group
15th SUPPLY youth group
22nd Last Day of Sunday School
22nd JAB Night

June

10th First Communion Retreat (4th graders)
12th First Communion Sunday
19th-25th SUPPLY Workcamp Trip to Omaha, NE
27th—July 1st Vacation Bible School

2011 LOMC Summer Camp Schedule

It is not too early to register for Summer Camp! Some scholarship money (up to 2/3's of the cost) is available. Information on specific camps is located on the bulletin board in the office hallway. A \$50 deposit holds your space. See Ms. June or call 630-759-7636 for more information.

Grade	1st - 3rd	4th-6th	6th-8th	9th-12th
June 12-17	Out of the Box Day Camp	Jr. Choir Mud Pies Day Camp	Picture This Rock Star	Picture This
June 19-24	Joy Camp Day Camp	Art Show Wet & Wild Day Camp	Faith Works Extravaganza Hoot Camp	
June 26-July 1	All the World's A Stage Day Camp	All the World's A Stage All Stars Day Camp	All the World's A Stage Mission Impossible	All the World's A Stage Theka
July 3-8	Wet & Wild Day Camp	Gone Fishing Art Show Day Camp	Faith Works for Individuals Gone Fishing	Theka (week 2)
July 10-15	Animal Planet Day Camp	Adventure Camp Trail Riders Day Camp	Trail Riders Hoot Camp Rock Star	
July 17-22	Joy Camp Day Camp	Gone Fishing Wet & Wild Day Camp	Survivor LOMC's Got Talent	Swing Choir Tour Survivor
July 24-29	Mud Pies Day Camp	All Stars Adventure Camp Day Camp	Tee Time Swing Choir	Swing Choir Tour (week 2)
July 31- Aug. 5	Wet & Wild Day Camp	Art Show Mud Pies Day Camp	Hoot Camp	SALT for Individuals
August 7-12	Retro Week Day Camp	Retro Week Day Camp	Retro Week	Retro Week

APRIL WORSHIP LEADERS

Greeters

8:00am	Gayle Sieder
9:30am	Dan & Melissa Dehnert
11:00am	Cheryl Deardorff

Worship Assistants

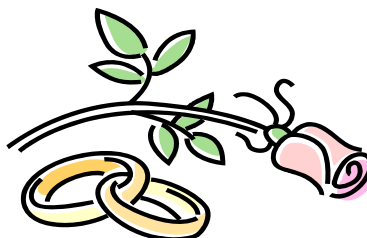
8:00am	Carolyn Yost
9:30am	Sue Karas
11:00am	Charlene Hopper

Ushers

8:00am	John Schmidt, Pat Jahn, Fred Mills, Joe & Daryl Giganti
9:30am	Blumenstein/Karas/Nelson/Costello Families
11:00am	Bruno & Maggie Sadowski, Cathy Taylor, Sue Ellwing-Ridley

Volunteers are always needed to help with worship - interested?
Contact the church office at 630.759.7636 or
officemgr@newlifebolingbrook.com

April Anniversaries



9 th	Cynthia & Pete Gatto
11 th	Bob & Susette Blumenstein
13 th	Chris & Jennifer Peterson
16 th	David & Annette Anderson
17 th	Rich & Sandie Zihala
22 nd	Nikki & John Eken
29 th	Don & Cris Berlin
30 th	Brian & Julie Riedy

If you do not see your name & date here
please let the church office know. Thanks

Money Matters

Personal Financial Stewardship

Loving Money

"People who want to get rich fall into temptation and a trap and into many foolish and harmful desires that plunge men into ruin and destruction. For the love of money is a root of all kinds of evil. Some people, eager for money, have wandered from the faith and pierced themselves with many griefs" 1 Timothy 6:9-10.

How much we love money is not dependent upon the amount of money that we may have. We can love money and have very little love of it, or we can have lots of it and not love it at all. Loving money is very subtle, and it can manifest itself in different ways. For example for those who have accumulated some money, it could be seen in an unhealthy obsession with the investment markets. It could be seen in our desire to hoard our money and not give. Power and success for those who focus on money is relative to how much money they have.

Because we live in a very materialistic society, there is a great deal of interest in money. Webster's Dictionary defines materialism as "the tendency to be more concerned with material things than with spiritual goals or values." Materialism leads us to spend money we don't have in order to buy things we don't need so that we can impress people we don't even like. A materialistic person loves his possessions, is greedy, and lacks contentment.

The following are three negative consequences of both loving money and becoming part of our materialistic society:

Distorts our thinking: Our hearts become darkened. *"For although they knew God, they neither glorified him as God nor gave thanks to him, but their thinking become futile and their foolish hearts were darkened"* (Romans 1:22-23).

Stimulates our pride: We become self-sufficient rather than relying on God. *"You may say to yourself, 'My power and the strength of my hands have produced this wealth for me' "* (Deuteronomy 8:17).

Preoccupies our thoughts: We have no time or concern for the needy or for God. *"Their destiny is destruction, their god is their stomach, and their glory is in their shame. Their mind is on earthly things"* (Philippians 3:19).

When we call upon God's strength, God will empower us to serve him rather than our money. As we spend time hearing and reading God's Word, he will strengthen our faith so we can break the power that money and possessions can have over us.

Blessings from your Stewardship Committee on your Stewardship Journey!

=== Get to Know Us ===

* THE CARE TEAM *

Seeking to provide care and compassion to our congregation, our community and the world around us. The Care Team is an expression of faith: a response to God's new commandment in *John 13:34-35*,

"As I have loved you, so you must love one another."

CARE NOTES:

Lenten themed booklets are now available on the kiosk in the back of the sanctuary. Stop by to check out these resources for your Lenten journey as well as many other subjects available for adults, teens and kids.

BLOOD DRIVE:

Save-The-Date: Your next opportunity to give the gift of life is April 10. Any donors from January will be able to give again and of course, any new donors are welcome. Did you know that 60% of the population is eligible to donate, yet fewer than 3% actually do? Every gift makes a difference for someone. Sign-up sheet is posted in the narthex. Walk-ins welcome too!

MARY MARTHAS:

This is a ministry that has been around a long time at New Life. But maybe you aren't familiar with it or don't remember the story of sisters Mary and Martha from the Luke 10:38-42. While Martha was busy preparing a meal for Jesus who had come to their home, Mary was sitting at Jesus' feet to listen to Him. As Mary Martha volunteers we are called to provide a meal for a member that is in a health care crisis, or recovering at home from illness/surgery or to those who have suffered a loss; and be present to listen and pray for their needs.

We have just updated this ministry by having an interactive, on line menu calendar called Meal Train that is customized to the family in need including drop off times, meal preferences, and running list of past meals so everyone doesn't bring meatloaf! This new tool will help

- make it easier to know of the opportunity to serve,
- make it easier to schedule a variety of people, and
- give the family a way to visually see the support from many different people as well as receive words of encouragement.

How Does It Work?

- * You will receive an email from Meal Train with the personalized web address to access the specific page for a specific family.
- * When you click on the link, you will need to create your user account which is your email address and password of your choosing.
- * You simply will click on the "book this date" icon next to the date that you wish to provide a meal.

- * There is also a section where you can write a note or word of encouragement for the family.
- * This website will also send you a reminder email a few days before your reserved date!
- * The frequency of providing a meal is likely less than once a month.
- * If there is another family in need of this support in the future, you will receive another email from Meal Train with that family's personalized web address to access their specific page.
- * It's very easy to use after you've viewed the page but Susan Brown is willing to help anyone who needs it or has questions.

If you are interested in joining this ministry and using this new tool, please sign up in the narthex, contact the church office or Susan Brown to get started. If you are interested in joining this ministry but don't have email or don't want to use the online tool, you can still to be involved by signing up in the narthex or contacting the church office or Susan Brown. And even if you don't cook or have time to cook; it's still a gift to know where to get good take-out food!

COMMUNITY EASTER BASKETS

As the calendar rolls to March, we start to think Easter. But Easter is not until the end of April! You can get in the mood by signing up to donate food items for the Community Food Baskets. We have been able to provide baskets for many families in our community to experience the love of Christ through this sharing of our gifts. The poster will go up at the end of March. Donations will need to be at the church by Sunday, April 17 to be packed by our Confirmation Class.

CARING FOR GOD'S CREATION – APRIL EARTH MONTH

Just in case someone is getting the urge to do some spring cleaning early with the 50 degree temperature; we wanted to give you a heads up on what items we will be collecting during the month of April to recycle responsibly. Collection containers will be available in the fellowship hall at the church starting in April through the end of the month.

1. Household Batteries – AAA, AA, C, D, 9-volt Batteries do not belong in landfills as the metals have the potential to leach slowly into soil, groundwater or surface water.
2. Old, worn-out, run down tennis shoes - have a second life as being ground up and reused to make playground surfaces. Blue wire bin is currently located in fellowship hall and will continue through the end of April.
3. Glasses, hearing aids, magnifiers, "talking" clocks, and white canes are all items that can be recycled by the Lions Club to provide services for others.
4. Cell phones & printer ink cartridges – reprogrammed for emergency use and cartridges can be refilled.
5. Greeting cards - Recycling cards can support the children's non-profit organization of St. Jude's Ranch for Children. All occasions of greeting cards are accepted, except the brands Hallmark, Disney or American Greetings. Only the card front can be used (back side cannot have any handwriting.)

AVAILABLE RIGHT NOW AND EVERYDAY:

- newspaper/white paper/magazine recycling are available in green/yellow bin at the north end of the parking lot at church.
- Pop tabs are recycled to benefit Ronald McDonald House. White bucket is available in the fellowship hall next to the pop machine.
- plastic caps for dialysis

SERVANT PROJECTS:

More and more Christians are becoming aware that the heart of God is to move beyond just the sanctuary and into the world to minister compassion and justice. We want to provide and promote opportunities for you and/or your family to be of service to caring for someone in our community or God's creation. Watch the website, monthly newsletter, Sunday bulletins and bulletin board in the narthex for upcoming opportunities.

HOSPITAL SISTERS MISSION OUTREACH

The Hospital Sisters of the Third Order Regular of St. Francis have a mission to be good stewards both locally and abroad. They have systems in place to receive, refurbish and redistribute surplus equipment and medical goods to organizations in need. The program offers servant opportunities by sorting medical supplies as well as learning what it truly means to be "green" and become part of the environmental and social justice movement. Their warehouse is located in Bedford Park at 5213 W. 65th Street. Scheduled volunteer sessions are:

Tuesday and Wednesday from 9 a.m. - 12 p.m.

Tuesday and Thursday from 1 p.m. - 4 p.m.

Thursday evening from 5 p.m. – 7 p.m.

The 2nd and 4th Saturdays of a month from 9 a.m. - 12 p.m.

This is an opportunity you can schedule on your own or with a group of adults from church or your neighborhood. You can go once or once a month! To serve, simply call Mary Ann Skvara, Warehouse & Logistics Facilitator at 708-496-3900 to get on the calendar.

F.A.N.S. Friends Family and Neighbors Supporting Students

Here is a volunteer opportunity for individuals to get involved with our Valley View School District 365U students in Bolingbrook. Can you spend an hour each week with a child? Can you be a good listener? Can you help a child gain new skills, interests and expand their experience? If you answer yes, these following mentoring programs are available:

Read to a Kindergarten student during the school day

Lunch buddies: Eating lunch with an elementary school student one day a week, throughout the school year.

One-to-One: Giving time and attention to a middle school child while enjoying shared activities.

High School Mentoring: Developing a positive relationship with a teen, showing them you care.

Being a mentor is about sharing simple moments with a child to provide the extra boost they need to stay in school and grow up right. Training is provided by Big

Brothers Big Sisters. For more information, contact Carrie Johnstone at the school district 815-886-2700 x527 or johnstonecl@vvsd.org

FOOD PANTRY:

An ongoing opportunity for you to share your gifts is by contributing an item to the food pantry. Maybe consider a "giving journey" during Lent where every week you could add an item to your grocery list and then place that item in the shopping cart in the narthex. And if you are looking for some suggestions; in honor of St. Patrick's Day, how about some green foods (vegetables would be a good choice) or a food item in green packaging or any item of your choosing. Please remember that these boxes, bags, or cans must be unopened and unexpired.



Thanks to all the New Life volunteers at Mission Outreach today. (March 12th) You moved over TWO TONS of medical supplies, getting them closer to those who need them around the world!

Lightbulbs

Daily Scripture:

'You are the light of the world. A city built on a hill cannot be hidden. No one after lighting a lamp puts it under the bushel basket, but on the lampstand, and it gives light to all in the house. In the same way, let your light shine before others, so that they may see your good works and give glory to your Parent in heaven.'
Matthew 5:14-15

We challenge ourselves, particularly the economically secure, to tithe environmentally. Tithers would reduce their burden on the earth's bounty by producing ten percent less in waste, consuming ten percent less in nonrenewable resources, and contributing the savings to earthcare efforts. Environmental tithing also entails giving time to learn about environmental problems and to work with others toward solutions.

From the ELCA social statement "Caring for Creation"

Fact:

Replacing a single incandescent bulb with a compact fluorescent lightbulb (CFL) will keep a half-ton of CO₂ out of the atmosphere over the life of the bulb. If everyone in the U.S. used energy-efficient lighting, we could retire 90 average size power plants. Saving electricity reduces CO₂ emissions, sulfur oxide and high-level nuclear waste.

Commitment:

Immediate- Replace your regular incandescent light bulb with a compact fluorescent. They can screw into regular sockets and cast great light. Another benefit along with the environmental benefits is that the bulbs last a long time (up to 10 years or more) so you can save some of your own work as well. You can find these heavenly bulbs in your local home store or hardware store.

Long term- Watch how you use lights in your house. Turn off lights when you are not in rooms or at home. Look to ways where you can do a full retrofit of the lighting in your home, congregation or business both to save money on energy, but also to save energy and thus the environment.

Daily Prayer:

Lord of Light, you have called us to be light for the world. Help us to be lights for the created world, to use light and energy responsibly and to use our resources carefully and wisely. Amen.



Thank You...

Dear Pastors and New Life family,

Denis and I would like to take this time to first of all thank the prayer chain for keeping Bill and Betty Nickles and the kids in their prayers for over two years while Bill was fighting the multiple Myloma and continuing the prayers for the Nickles Family. We also would like to thank the congregation for expression of sympathy and prayers. God bless you all.

Love, Denis, Rose and Nickles Family

Change of Address



Cassidy, Jim & Patti

4847 Marco Polo
North Las Vegas, NV 89031

Foss, Ellen -

street address should be **Lakeshore**
(not Lakeview) Drive

Please notify the office if you are planning a move.